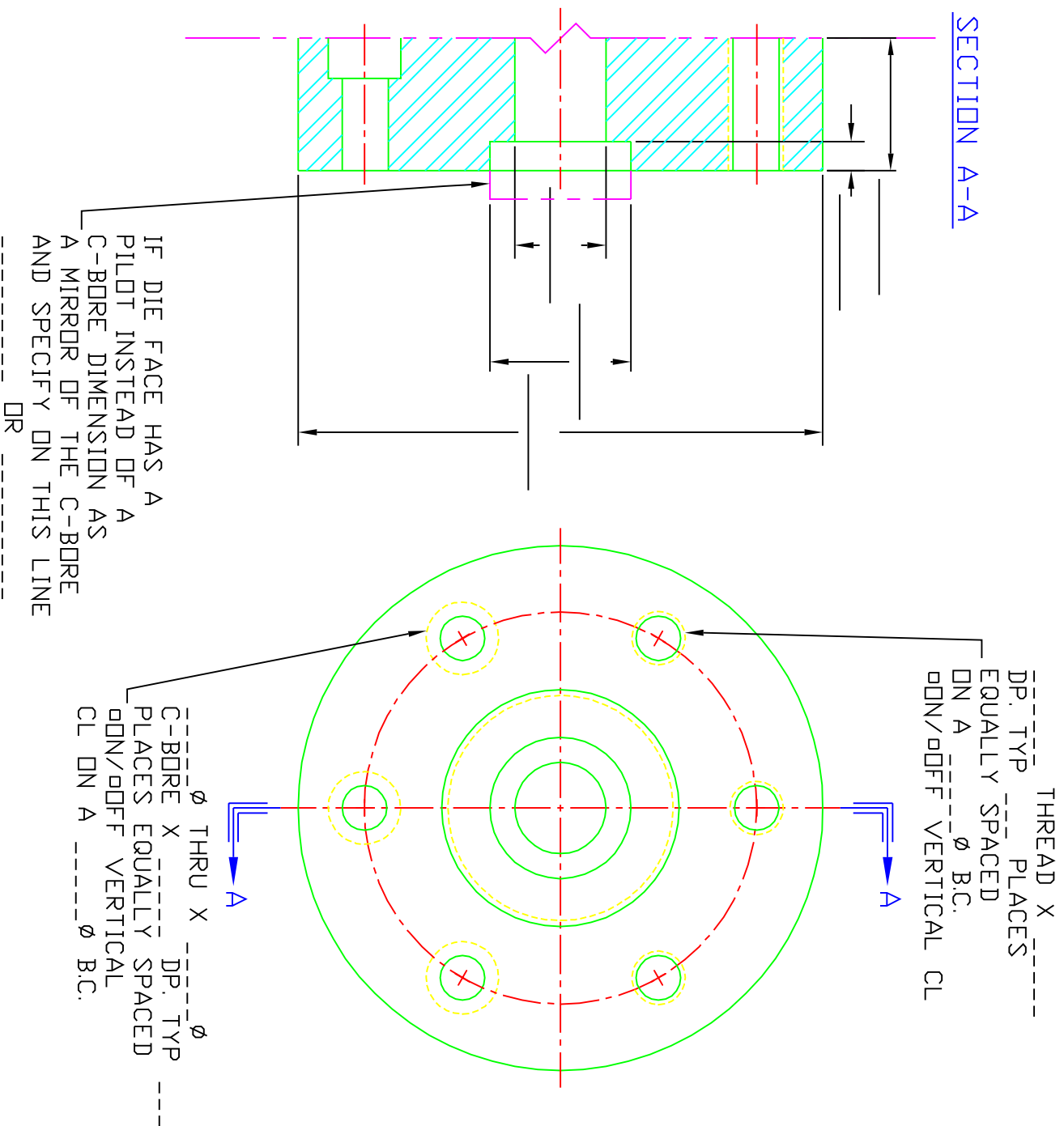


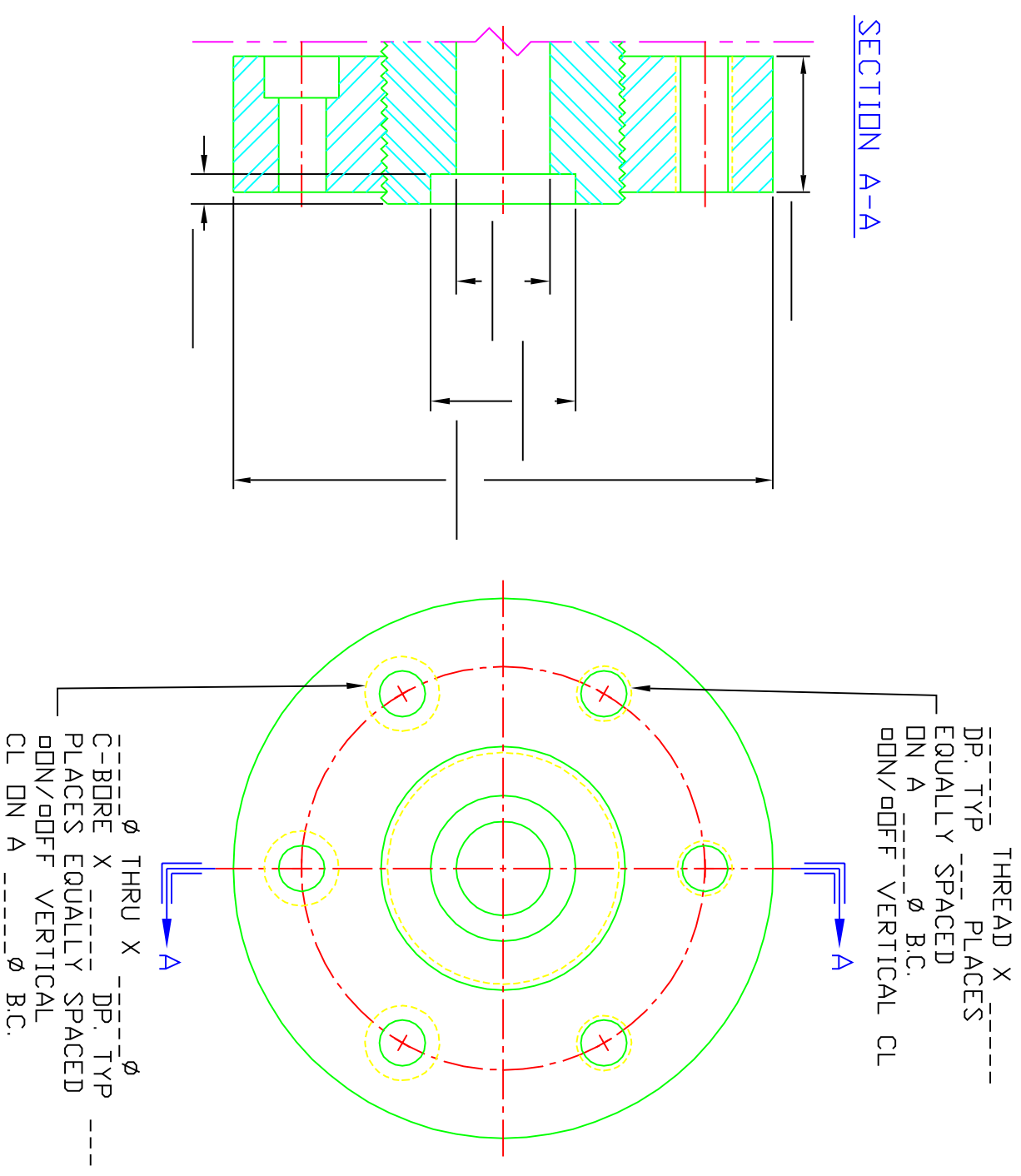
TYPICAL DIE FACE

THE DRAWING BELOW IS DESIGNED TO CLARIFY THE DIMENSIONS NEEDED TO ADAPT TO A TYPICAL DIE FACE. PLEASE FILL IN THE BLANKS AND PROVIDE ANY OTHER NECESSARY DATA THAT MAY NOT BE SHOWN ON THIS GENERIC DRAWING.




TYPICAL EXTRUDER FLANGE

THE DRAWING BELOW IS DESIGNED TO CLARIFY THE DIMENSIONS NEEDED TO ADAPT TO A TYPICAL EXTRUDER FLANGE. PLEASE FILL IN THE BLANKS AND PROVIDE ANY OTHER NECESSARY DATA THAT MAY NOT BE SHOWN ON THIS GENERIC DRAWING.



CONFIDENTIAL

LET	REVISION	DATE	BY
A	RELEASED	08/26/03	GW
 POLYMER SYSTEMS, INC. 350 STATE STREET HICKORY, NC 28602			
TITLE: EXTRUDER FLANGE AND DIE FACE MEASUREMENTS			
SCALE:	NTS	DATE:	08/26/03
BY:	DCW	DATE:	08/26/03
CHECKED:	ER	DATE:	08/26/03
APPROVED:	GW	DATE:	08/26/03