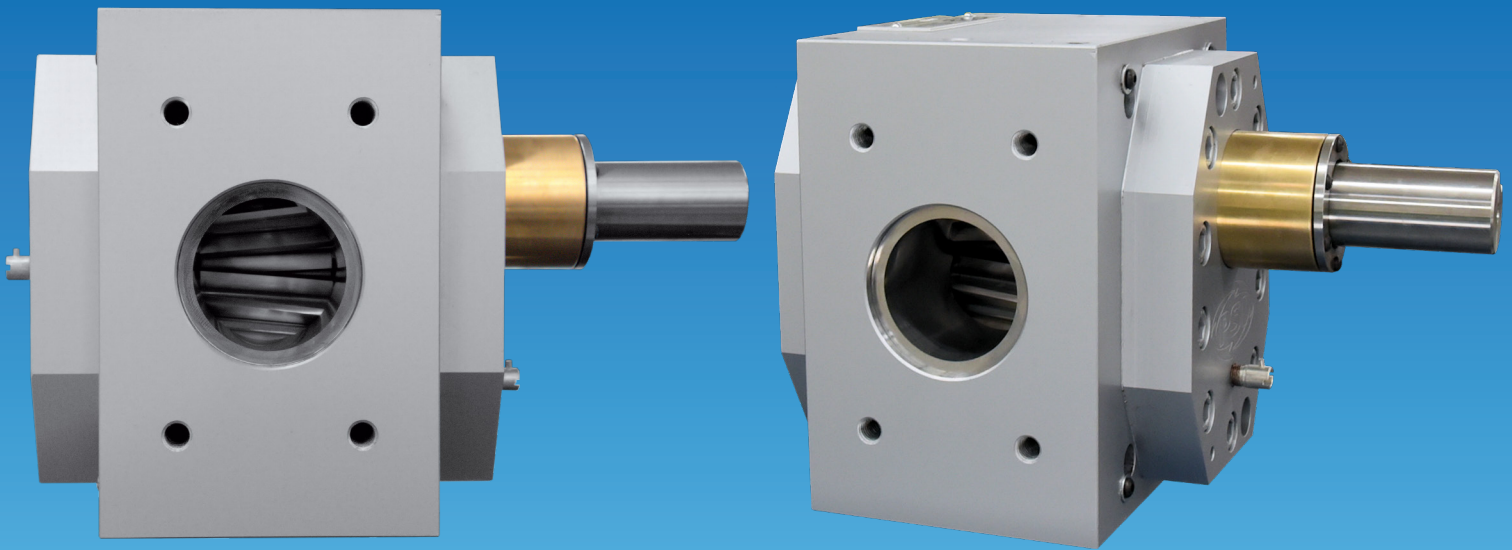




Get More from Your Process

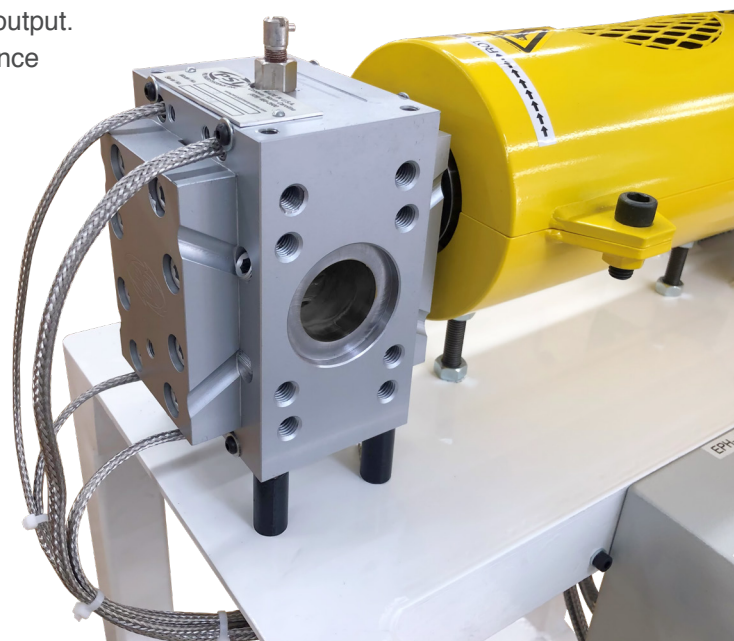


Chemical Industrial Gear Pump (CIP)

PSI Chemical Industrial Gear Pumps (CIP) are engineered for the exacting process demands of low viscosity fluids including prepolymers, polymers, hot melt adhesives, industrial chemicals, pharmaceuticals, food, and more. Designed for applications with differential pressures up to 1000 psi and viscosities between 100 and 250,000 cPs, these highly precise transfer gear pumps are an efficient solution for pressure building and output stabilization. Closely held tolerances assure accurate and repeatable volumetric output. PSI's innovative patent-pending lip seal provides leak-free performance across a broad range of viscosities and pressures, including those under vacuum, and is especially well suited to melt-blown and adhesive applications.

Features

- Long-lasting through-hardened tool steel gears
- Easy-maintenance, one seal design
- 30%-50% more seal area than any other competitor
- Up to 99+% efficient
- Integral pressure instrument ports (size 38 and above)
- Compact, low-profile design
- Drop-in replacements for most competitors' gear pumps



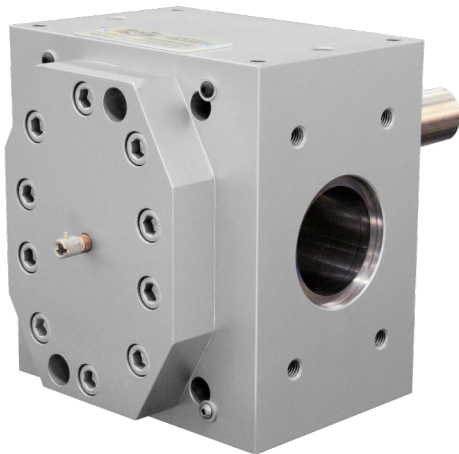
Chemical Industrial Gear Pump (CIP)

Options

- Single lip or double lip seal (patent pending)
- Single or double mechanical seal
- Packing seal
- Seal cooling
- Application-specific materials of construction
- Application-specific clearances
- Internal fluid heat/cool
- Flush/bleed ports
- Pump or cart-mounted J-box
- Servo drives for rapid response to speed changes
- Hazardous location classification

Accessories

- Support cart
- Variable frequency drives
- Pressure instruments
- Adaptors
- Motor encoders
- PLC controls
- Heat control



Technical

Specifications	Standard
Throughput rate (pph) [kg/h]	95 - 81,000 [43.1 - 36,740]
Displacement (cc/rev)	10.3 - 2,215
Temperature (°F) [°C]	Up to 650 [343]
Max oper. pressure (PSI) [bar]	max. 1,000 [69]
Differential pressure (PSI) [bar]	max. 1,000 [69]
Heating	Electric/Fluid



Cart-mounted PSI CIP gear pump system with PSI HEX-SM heat exchanger and chiller.



Main Office:
PSI-Polymer Systems, Inc.
1703 Pineview Street SE
Conover, NC 28613
United States

Contact Us:
www.psi-polymersystems.com
sales@psi-polymersystems.com
service@psi-polymersystems.com
Ph: USA 1.828.468.2600

European Sales Office:
PSI-Polymer Systems Europe, GmbH
Friedrich-Ebert-Str. 11
DE 74177 Bad Friedrichshall, Germany
HTS code: 8477900020

